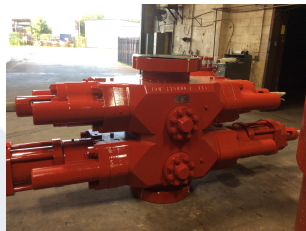
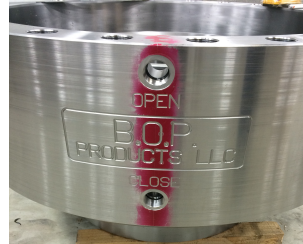
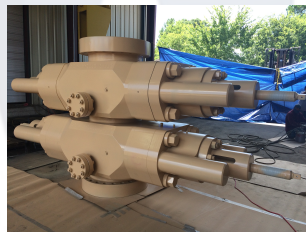




Responsiveness



Reliability



Readiness



B.O.P. Products, LLC

Rental Equipment Catalogue



Table of Contents

Equipment Listing	Page Number
Blow Out Preventors - Annular Type	3
Blow Out Preventors - Ram Type	4
Blow Out Preventor Ram Blocks	
Type U Straight Bore Rams	5
Type U Shear and Blind Rams	6
Type U Variable Bore Rams	7
Misc. Package Configuration	
30" 1M & 29-1/2" 500 Diverter Package Configuration	8
21-1/4" 2M Diverter Package Configuration	9
13-5/8" 5M Drilling Package Configuration	9
Misc. Pressure/Well Control Equipment	10-15



Pressure Control Equipment



Category: **Blow Out Preventors - Annular Type**

Manufacturers: **B.O.P. Products & Other Quality OEM Brands**

Bore Sizes: **Pressure Rating:**

7-1/16"
11"
11"
13-5/8"
13-5/8"
16-3/4"
21-1/4"
21-1/4"
29-1/2"
30"

5,000 psi
5,000 psi
10,000 psi
5,000 psi
10,000 psi
5,000 psi
2,000 psi
5,000 psi
500 psi
1,000 psi





Pressure Control Equipment



Category:

Blow Out Preventors - Ram Type

Manufacturers:

B.O.P. Products & Other Quality OEM Brands

Bore Sizes:

7-1/16"
11"
13-5/8"
20-3/4"
21-1/4"
18-3/4"
26-3/4"

Pressure Rating:

5,000, 10,000 & 15,000 psi
5,000, 10,000 & 15,000 psi
5,000, 10,000 & 15,000 psi
3,000 psi
2,000, 5,000 & 10,000 psi
10,000 psi
3,000 psi

Cavity:

Singles & Doubles
Singles & Doubles
Singles & Doubles
Singles & Doubles
Singles & Doubles
Singles & Doubles
Singles & Doubles

Large Bore Shear Bonnets with Tandem Boosters are also available.





Pressure Control Equipment

Category: Blow Out Preventor Ram Blocks

Fixed Pipe Bore Rams

Size	Type	Pressure Rating	Range Available
7-1/16"	U	3,000 -15,000 psi	1.050", 1.315", 1.66", 1.9", 2.062", 2-3/8", 2-7/8", 3-1/2", 4", 4-1/2", 5", 5-1/2"
11"	U	3,000-10,000 psi	1.315", 1.66", 1.9", 2.062", 2-3/8", 2-7/8", 3-1/2", 4", 4-1/2", 4-3/4", 5", 5-1/2", 5-3/4", 6", 6-5/8", 7", 7-5/8", 7-3/4", 8-5/8"
11"	U	15,000 psi	1.66", 1.9", 2.062", 2-3/8", 2-7/8", 3-1/2", 4", 4-1/2", 5", 5-1/2", 6", 6-5/8", 7", 7-5/8"
13-5/8"	U	3,000-10,000 psi	1.315", 1.66", 1.9", 2.062", 2-3/8", 2-7/8", 3-1/2", 4", 4-1/2", 4-3/4", 5", 5-1/2", 5.875", 6", 6-5/8", 7", 7-5/8", 7-3/4", 8-5/8", 9, 9-5/9", 10-3/4", 11-3/4"
13-5/8"	U	15,000 psi	2.062", 2-3/8", 2-7/8", 3-1/2", 4", 4-1/2", 4-3/4", 5", 5-1/2", 5.875", 6", 6-5/8", 7", 7-5/8", 7-3/4", 8-5/8", 9, 9-5/8", 10-3/4"
20-3/4" / 21-1/4"	U	2,000 -3,000 psi	2-3/8", 2-7/8", 3-1/2", 4", 4-1/2", 4-3/4", 5", 5-1/2", 5.875", 6", 6-5/8", 7", 7-5/8", 8-5/8", 9, 9-5/8", 10-3/4", 11-3/4", 13-3/8", 13-5/8", 16"
21-1/4"	U	5,000 - 10,000psi	2-3/8", 2-7/8", 3-1/2", 4", 4-1/2", 4-3/4", 5", 5-1/2", 5.875", 6", 6-5/8", 7", 7-5/8", 8-5/8", 9, 9-5/8", 10-3/4", 11-3/4", 13-3/8", 13-5/8", 16"
18-3/4"	U	10,000 psi	2-3/8", 2-7/8", 3-1/2", 4", 4-1/2", 5", 5-1/2", 5.875", 6", 6-5/8", 7", 7-5/8", 8-5/8", 9, 9-5/8", 10-3/4", 13-3/8"
26-3/4"	U	3,000 psi	2-3/8", 2-7/8", 3-1/2", 4", 4-1/2", 5", 5-1/2", 5.875", 6", 6-5/8", 7", 7-5/8", 8-5/8", 9, 9-5/8", 10-3/4", 11-3/4", 13-3/8", 16", 20"

Dual Rams are available for all above sizes, models and pressure rating, some may require specialty order

Blind Rams / CSO's are available for all above sizes, models and pressure rating at same price.



Pressure Control Equipment

Category: Blow Out Preventor Ram Blocks

Shear and Blind Ram Blocks

Size	Type	Pressure Rating	Model
7-1/16"	U	3,000-15,000 psi	Shear SBR and SBR - H2S Blind CSO
11"	U	3,000-10,000 psi	Shear DS, SBR and SBR - H2S Blind CSO
11"	U	15,000 psi	Shear SBR and SBR - H2S
13-5/8"	U	3,000-10,000 psi	Shear ISR, DS, SBR and SBR - H2S Blind CSO
13-5/8"	U	15,000 psi	Shear SBR and SBR - H2S
18-3/4"	U	5,000 -10,000 psi	Shear SBR and SBR - H2S
20-3/4" / 21-1/4"	U	2,000-3,000psi	Shear SBR and SBR - H2S Blind CSO
21-1/4"	U	5,000 psi	Shear SBR and SBR - H2S Blind CSO





Pressure Control Equipment



Category: Blow Out Preventor Ram Blocks

Manufacturers: B.O.P. Products & Other Quality OEM Brands

B.O.P. Products 700 Series (Type U) Variable Bore Rams

Size	Type	Pressure Rating	Ranges Available
7-1/16"	U	3,000-15,000 psi	2-3/8" - 3-1/2" & 2-7/8" - 4"
7-1/16"	U FLEX	3,000-15,000 psi	2-3/8" - 2-7/8" & "2-7/8 - 3-1/2"
11"	U	3,000-10,000 psi	2-7/8" - 5"
11"	U FLEX	3,000-10,000 psi	2-3/8" - 3-1/2" & 3-1/2" - 5"
11"	U	15,000 psi	2-7/8" - 5"
13-5/8"	U	3,000-10,000 psi	2-7/8" - 5" & 3-1/2" - 5-1/2" & 3-1/2" - 5-7/8" & 4-1/2" - 7"
13-5/8"	U FLEX	3,000-10,000 psi	2-3/8" - 3-1/2" & 3-1/2" - 5" & 5" - 6-5/8"
13-5/8"	U	15,000 psi	3-1/2" - 5" & 3-1/2" - 5-1/2" & 3-1/2" - 5-7/8" & 5" - 7"
13-5/8"	T	10,000 psi	2-7/8" - 5" & 3-1/2" - 5-1/2"
21-1/4" / 20-3/4"	U	2,000 or 3,000 psi	5" - 7"



Pressure Control Equipment Package Stack Samples

Package Type: **Diverter - 30" 1000 psi Systems**

Consisting of:

1 x 30" 1000 psi Annular BOP, 30" 1M R-95 Flange down, 30" 1M R-95 Studded Top
1 x 30" 1000 psi Diverter Spool, 30" 1M Flanged Top & Bottom, c/w 2 off 13-5/8 3M R-57 Flanged Side Outlets
1 x 30" 1000 psi R-95 Butt Weld Flange for Conductor top
2 x 12" CI 900 Diverter Ball Valves, Hyd Actuated, 13-5/8" 3M Flanged R-57
2 x 13-5/8" 3000 psi R-57 Butt Weld Flanges for Diverter Valve to flare lines connection
Flare Lines, 12" by 15' sections c/w Flange or Hammer Lug connections to customer specifications.
28 Studs c/w 1 Nut 2" 8UN x 11-1/2" Long, Top of Annular
56 Studs c/w 2 Nuts 2" 8UN x 14-1/2" Long for the 30" 1000 psi R-95 Flanges & 30" 1M Butt Weld Flange
80 Studs c/w 2 Nuts 1-3/8" 8UN x 10-3/4" Long for the two 12" Diverter Valves & Butt Weld Flanges
3 each R-95 Ring Gaskets (for 30" 1M Profile)
4 each R-57 Ring Gaskets for the two 12" Diverter Valves
Sales items: Studs/Ring Gaskets provided at Cost + 15%

Package Type: **Diverter - 29-1/2" 500 psi Systems**

Consisting of:

1 x 29-1/2" 500 psi Annular BOP, 29-1/2" 500 psi WP R-95 Flange down, 29-1/2" 500 psi R-95 Studded Top
1 x 29-1/2" 500 psi Diverter Spool, 29-1/2" 500 psi Flanged Top & Bottom, c/w 2 off 13-5/8 2M R-57 Flanged Side Outlets
1 x 29-1/2" 500 psi R-95 Butt Weld Flange for Conductor top
2 x 12" CI 600 Diverter Ball Valves, Hyd Actuated, Flanged 13-5/8" 2M R-57
2 x 13-5/8" 2000 psi R-57 Butt Weld Flanges for Diverter Valves to Flare Lines connection
Flare Lines, 12" by 15' sections c/w Flange or Hammer Lug connections to customer specifications.
28 Studs c/w 1 Nut 1-3/4" 8UN x 9-1/8" Long, Top of Annular
56 Studs c/w 2 Nuts 1-3/4" 8UN x 13-1/2" Long for the 29-1/2" 500 psi R-95 Flanges & 29-1/2" Butt Weld Flange
80 Studs c/w 2 Nuts 1-1/4" 8UN x 9-1/2" Long for the two 12" Diverter Valves & Butt Weld Flanges
3 each R-95 Ring Gaskets (for 29-1/2" Profile)
4 each R-57 Ring Gaskets for the two 12" Diverter Valves
Sales items: Studs/Ring Gaskets provided at Cost + 15%



Pressure Control Equipment

Package Type: **Diverter - 21-1/4" 2000 psi Systems**

Consisting of:

1 x 21-1/4" 2000 psi Annular BOP, 21-1/4" 2M R-73 Flange down, 21-1/4" 2M R-73 Studded Top
1 x 21-1/4" 2000 psi Diverter Spool, 21-1/4" 2M R-73 Flanged Top & Bottom, c/w 2 off 13-5/8 3M R-57 Flanged Side Outlets
1 x 21-1/4" 2000 psi R-73 Butt Weld Flange for Casing Connection
2 x 12" CI 900 Diverter Ball Valves, Hyd Actuated, Flanged 13-5/8" 3M R-57
2 x 13-5/8" 3000 psi R-57 Butt Weld Flanges for Diverter Valves / Flare Lines
Flare Lines, 12" by 15' sections c/w Flange or Hammer Lug connections to customer specifications.
24 Studs c/w 1 Nut 1-5/8" 8UN x 8-3/8" Long, Top of Annular
48 Studs c/w 2 Nuts 1-5/8" 8UN x 12-1/2" Long for the 21-1/4" 2000 psi R-73 Flanges & 21-1/4" 2M R-73 Butt Weld Flange
80 Studs c/w 2 Nuts 1-3/8" 8UN x 10-3/4" Long for the two 12" Diverter Valves & Butt Weld Flanges
3 each R-73 Ring Gaskets (for 21-1/4" 2M Profile)
4 each R-57 Ring Gaskets for the two 12" Diverter Valves
Sales items: Studs/Ring Gaskets provided at Cost + 15%

Package Type: **Drilling - 13-5/8" 5000 psi Systems**

Consisting of:

1 x 13-5/8" 5000 psi Annular, Double & Single BOP, 13-5/8" 5000 psi WP BX-160 Flanged
1 x 13-5/8" 5000 psi Drilling Spool, 13-5/8" 5000 psi BX-160 Top & Bottom, c/w 2 off 4-1/6" 5,000psi Flanged Side Outlets
2 x 4-1/16" 5,000 Hyd Actuated Gate Valves, Flanged
2 x 2-1/16" 5,000 Manual Operated Gate Valves, Flanged
1 x 2-1/16" 5,000 Check Valve, Flanged
16 Studs c/w 1 Nut 1-3/4" 8UN x 8-3/4" Long, Top of Annular
16 Studs c/w 2 Nuts 1-1/4" 8UN x 8-1/2" Long for the 4-1/16" 5M R-39 Valve Connections
16 Studs c/w 2 Nuts 7/8" 8UN x 6-1/4" Long for the 2-1/16" 5M Valve Connections
DSA (Double Studded Adapter), 4-1/16" 5M X 2-1/16" 5M, c/w Studs and Nuts Included
3ea. BX-160 Ring Gaskets (for 13-5/8" 5M Connections), 3ea. R-24 & R-39 Ring Gaskets (for 2-1/6" 5M & 4-1/16" 5M Connections)
Sales items: Studs/Ring Gaskets provided at Cost + 15%



Pressure Control Equipment



Category:

Manifolds - Choke & Kill / Testing

Type:

Gate Valve Type (c/w choice of number and arrangement of manual and auto chokes with operators control panel, on oilfield skid)

Bore Sizes:

Pressure Rating:

2-1/16"
3-1/16"
4-1/16"

5,000, 10,000 & 15,000psi
5,000, 10,000 & 15,000psi
5,000, 10,000 & 15,000psi



Pressure Control Equipment



Category: BOP Control Accumulator Units

5 Function:

Full API 16D Complaint, 12 x 11 gallon accumulator BOP control Unit, with 2 x 60:1 ratio air operated hydraulic pumps and electrical driven hydraulic triplex pump

6/7 Function:

Full API 16D Complaint, 20 x 11 gallon accumulator BOP control Unit, with 2 x 60:1 ratio air operated hydraulic pumps and electrical driven hydraulic triplex pump



Each Unit has dual Remote panels c/w 150 foot umbilical.

Each Unit has a full set of 100' long Flame retardant BOP Control Hoses.



Pressure Control Equipment



Category:

Valves - Gate, Ball & Check

Manual Slab Gate Valves

2"	3M, 5M, 10M, & 15M
3"	3M, 5M, 10M, & 15M
4"	3M, 5M, 10M, & 15M

Hydraulic Actuated Gate

2"	3M, 5M, 10M, & 15M
3"	3M, 5M, 10M, & 15M
4"	3M, 5M, 10M, & 15M

Ball Valves (Diverter)

8"	5000 psi	Flange class 1500
12"	2000 psi	Flange class 600
12"	3000 psi	Flange class 900

Check Valves

2"	5M, 10M, & 15M
3"	5M, 10M, & 15M
4"	5M, 10M, & 15M



Pressure Control Equipment

Category: Chokes - Hydraulic, Manual & Fixed

Hydraulic Chokes w/Panels & Hose Assembly

2-1/16"	3M, 5M, 10M, & 15M
3-1/16"	3M, 5M, 10M, & 15M

Manual Adjustable H2 Type Choke

2-1/16"	3M, 5M, 10M, & 15M
3-1/16"	3M, 5M, 10M, & 15M
4-1/16"	3M, 5M, 10M, & 15M

Fixed (Bean) - Production Type Choke

2-1/16"	3M, 5M, 10M, & 15M
3-1/16"	3M, 5M, 10M, & 15M
4-1/16"	3M, 5M, 10M, & 15M

Category: Adaptors: DSAs, TEES & Flanges

DSAs - Most Configurations

1-13/16"	3M, 5M, 10M, & 15M
2-1/16"	3M, 5M, 10M, & 15M
3-1/8"	3M, 5M, 10M, & 15M
4-1/16"	3M, 5M, 10M, & 15M
5-1/8"	3M, 5M, 10M, & 15M
7-1/16"	3M, 5M, 10M, & 15M
11"	3M, 5M, 10M, & 15M
13-5/8"	3M, 5M, 10M, & 15M
16-3/4"	2M, 3M, & 5M
18-3/4"	5M, 10M, & 15M
20-3/4"	2M & 3M
21-1/4"	2M, 3M, 5M & 10M
26-3/4"	3M
30"	1M

Weld-Neck Flanges

2-1/16"	5M, 10M, & 15M
3-1/16"	5M, 10M, & 15M
4-1/16"	5M, 10M, & 15M
7-1/16"	5M, 10M, & 15M
11"	5M, 10M, & 15M
13-5/8"	2M, 3M, 5M, 10M, & 15M
18-3/4"	10M, & 15M
21-1/4"	2M, 3M, 5M, & 10M
26-3/4"	2M & 3M
29-1/2"	500 psi
30"	1M

Crosses Tees or Elbows

2-1/16"	5M, 10M, & 15M
3-1/16"	5M, 10M, & 15M
3-1/8"	5M, 10M, & 15M
4-1/16"	5M, 10M, & 15M

Flange x WECO Adapters

2-1/16"	5M, 10M, & 15M
3-1/16"	5M, 10M, & 15M
3-1/8"	5M, 10M, & 15M
4-1/16"	5M, 10M, & 15M



Pressure Control Equipment

Category:

Drilling and Diverter Spools

Size	Working Pressure
4-1/16"	3M, 5M, 10M, & 15M
7-1/16"	3M, 5M, 10M, & 15M
11"	3M, 5M, 10M, & 15M
13-5/8"	3M, 5M, 10M, & 15M

Size	Working Pressure
20-3/4"	3M
21-1/4"	2M, 5M, & 10M
26-3/4"	3M
29-1/2"	500 psi
30"	1M

Category:

Spacer Spool - Flange x Flange

Size	Working Pressure
4-1/16"	3M, 5M, 10M, & 15M
5-1/8"	5M & 10M
7-1/16"	3M, 5M, 10M, & 15M
11"	3M, 5M, 10M, & 15M
13-5/8"	3M, 5M, 10M, & 15M

Size	Working Pressure
20-3/4"	2M & 3M
21-1/4"	2M, 3M, 5M & 10M
26-3/4"	3M
30"	2M & 3M

Rentals quoted as per the rig requirement. May have some lead time for manufacturing.



B.O.P. Products, LLC - Pressure Control Equipment



Our Mission



B.O.P. Products vision is to be the world leading manufacturer of pressure control products and related services. We will earn our customers excitement through continuous improvements, guided by: reliability, communication, and innovation of our B.O.P. Products family.

Our mission is to be The Leader of Blowout Prevention requirements to the oil and gas industry, by delivering a superior, more economical, and on time product, with a personal touch, one customer at a time. Through each step, you are our number one priority.

From specific equipment solutions to immediate global responses, B.O.P. Products is dedicated to serving you.

INTEGRITY, TEAMWORK, AND
RESPONSIVENESS



B.O.P. Products, LLC U.S.A
Contact: Bryan May
Personal email: bryan@bop-products.com

Office email: sales@bop-products.com
Phone: 281-955-6321
Address: 9118 Sweetbrush Dr. Houston, TX 77064

B.O.P. PRODUCTS, LLC
Oilfield Equipment Connection

Rental Division
تأجير المعدات
Jebel Ali Free Zone
Dubai (United Arab Emirates)

B.O.P. Products, LLC UAE (Dubai)

Contact: Bryan May, Shadab Mian, & George Mitchell
Personal email: bryan@bop-products.com
Personal email: shadab@bop-products.com
Personal email: george@bop-products.com

Office email: sales@bop-products.com
Phone: +971 50 1930317
Address: P.O. Box 932, SM-Office 317D,
Ajman Free Zone – United Arab Emirates